

uni\_one

HIGH-TECH SKIN

SILK



uni\_one

# SILK

UNI\_ONE SYSTEM FINISHES, ENDURING  
BEAUTY LIKE SILK

## UNI\_ONE WOOD/ALUMINUM WINDOWS AND DOORS

Interior décor is about the surface finishes we can see and touch, which enrich the ambience within any property. Base materials can be transformed and made stronger to give enhanced beauty that lasts over time. Silk elevates the range and benefits of finishes, giving to uni\_one wooden profiles an extraordinary level of beauty and resistance.

## SILK, THE HIGH-TECH SKIN WHICH GIVES MORE ELEGANCE AND CHOICE TO YOUR WINDOW

Similar in concept to 'iron hand in velvet glove', the strong engineered pine wood is cloaked by veneering it with SILK finishes ensuring closer harmony with adjacent furniture and fittings to improve overall comfort.

Silk is the latest generation, tough hi-tech veneer, ecological, PVC and formaldehyde free and easy to maintain which ensures high resistance to abrasions, impact, scratches, stains, mould and colour stability on exposure to UV light.

*45 degrees joint*



*90 degrees joint*



uni\_one

# A UNIQUE SYSTEM OF WINDOWS

## ALUMINUM CLADDING SYSTEM OUTSIDE

Uni\_one external aluminum frames require minimal maintenance and provide excellent resistance to water, sea spray and air-borne pollutants, thus perfectly protecting the timber within. Aluminum frames are produced using welding technology for corners which give them maximum strength and quality. Painting is done after welding, ensuring invisible joints and perfectly sealed corners, much improving the aesthetics of the finished product

## THERMAL AND ACOUSTIC - INSULATED COMFORT

Wood has a high natural thermal insulation that significantly reduces energy needs for heating and cooling. With uni\_one it is possible to achieve excellent thermal insulation down to Passivhaus levels if required. The exceptional sound insulation also ensures a more comfortable environment, greater peace and isolation from outside noise.

## WIDE RANGE

Uni\_one uses natural, ecological materials but it is produced with time honoured techniques and methods of furniture manufacture by combining technology and design. The wide range of uni\_one typologies – and finishes – enables uni\_one windows to meet and satisfy any project requirement.

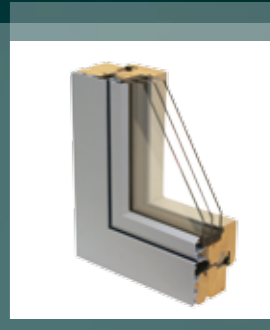
## WOOD-GLASS STRUCTURAL BONDING

The all-round structural bonding of the glass to the wooden sash, like a car windscreen, makes the window significantly more stable and resistant to distortion, allowing very large, bright openings to be created.

Standard



Coplanar



Termoscudo



Verbund



Comfort



Bronze



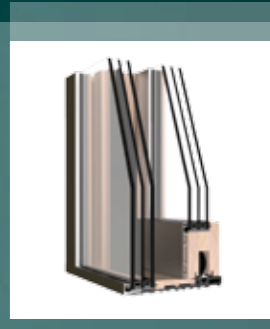
Integral



Zero



Hs-Zero





uni\_one

# SILK MAT LACQUER

The exquisite design, plus attention to functionality achieves the ultimate combination of beauty with practicality, thus 'designed for life'. It provides the warm and tactile experience of silk due to the smooth surface quality. Uniformity, resistance, recoverability.



# SILK

MAT LACQUER



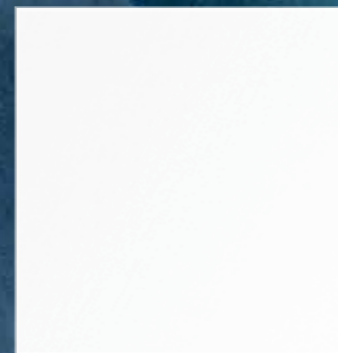
**MSxL1**  
WHITE MAT LACQUER



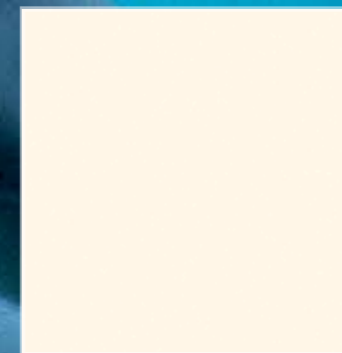
**MSxL2**  
IVORY MAT LACQUER



**MSxL3**  
GREY MAT LACQUER



**MSxL1**  
WHITE MAT LACQUER



**MSxL2**  
IVORY MAT LACQUER



**MSxL3**  
GREY MAT LACQUER



uni\_one

SILK

LACQUER

OPEN-  
GRAIN

Wood is a living material: the fibres are intertwined to create a texture that enhances the natural beauty of the wood whilst maintaining consistency of colour. Dynamism, strength, sensuality.

■ ■ ■ **SILK** OPEN-GRAIN LACQUER



**MSxP1**  
WHITE OPEN-GRAIN LACQUER



**MSxP2**  
GREY OPEN-GRAIN LACQUER



**MSxP1**  
WHITE OPEN-GRAIN LACQUER



**MSxP2**  
GREY OPEN-GRAIN LACQUER

A tiger is captured in a dynamic pose, swimming through dark water. The tiger's body is arched, and its head is turned towards the right, with its mouth slightly open. A large, energetic splash of white water is visible on the left side of the frame, partially obscuring the tiger's midsection. The tiger's fur is a mix of orange, black, and white stripes, and its eyes are a striking blue. The background is dark and out of focus, emphasizing the tiger and the splash.

uni\_one

# SILK WOOD OAK

Thanks to the latest innovation of creating synchronized grain texture, colour has been enhanced by precisely co-ordinated grain patterns, which exactly express the natural rhythm of Oak hardwood. Naturalness, strength, three-dimensionality.

# SILK OAK WOOD



**MSxR1**  
LIGHT GREY OAK



**MSxR2**  
SAND OAK



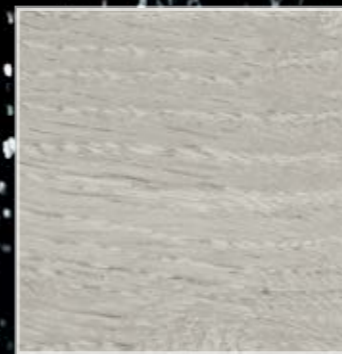
**MSxR5**  
BROWN OAK



**MSxR3**  
NATURAL OAK



**MSxR4**  
ANTHRACITE OAK



**MSxR1**  
LIGHT GREY OAK



**MSxR2**  
SAND OAK



**MSxR3**  
NATURAL OAK



**MSxR4**  
ANTHRACITE OAK



**MSxR5**  
BROWN OAK



uni\_one<sup>■■</sup>

# SILK<sup>WOOD</sup> ASH AND CHERRY

Evocative plays of light and shadows define the essence and the sinuous lines of ash wood finish while the cherry veining draw pure volumes redefining a new dialogue between classic and modern. Elegance, strength, refinement.

■ ■ ■ **SILK** WOOD **ASH AND  
CHERRY**



MSxF1  
ASH



MSxC1  
CHERRY



MSxF1  
ASH



MSxC1  
CHERRY

uni\_one<sup>®</sup>

# SILK

HIGH-TECH SKIN



SCRATCH  
RESISTANT



STAIN  
RESISTANT



MOULD  
RESISTANT



EASY CLEANING

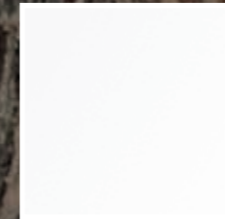


ECOLOGICAL PVC FREE  
FORMALDEHYDE FREE

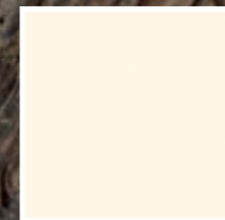


UV LIGHT  
RESISTANT

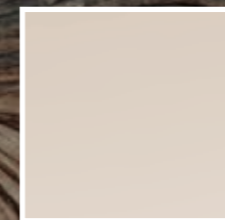
LACQUER  
\_ MAT



MSxL1  
WHITE MAT LACQUER



MSxL2  
IVORY MAT LACQUER



MSxL3  
GREY MAT LACQUER

LACQUER  
\_ OPEN-GRAIN



MSxP1  
WHITE OPEN-GRAIN LACQUER



MSxP2  
GREY OPEN-GRAIN LACQUER

WOOD  
\_ OAK



MSxR1  
LIGHT GREY OAK



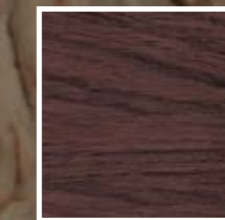
MSxR2  
SAND OAK



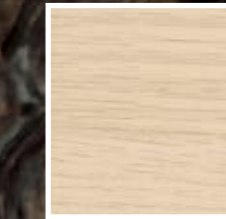
MSxR3  
NATURAL OAK



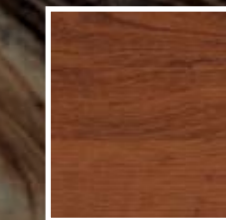
MSxR4  
ANTHRACITE OAK



MSxR5  
BROWN OAK



MSxF1  
ASH



MSxC1  
CHERRY

WOOD  
\_ ASH AND CHERRY

The colours represented in this brochure are merely indicative



[www.sistema-uni-one.it](http://www.sistema-uni-one.it)